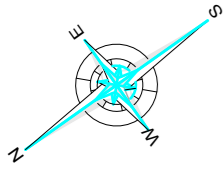
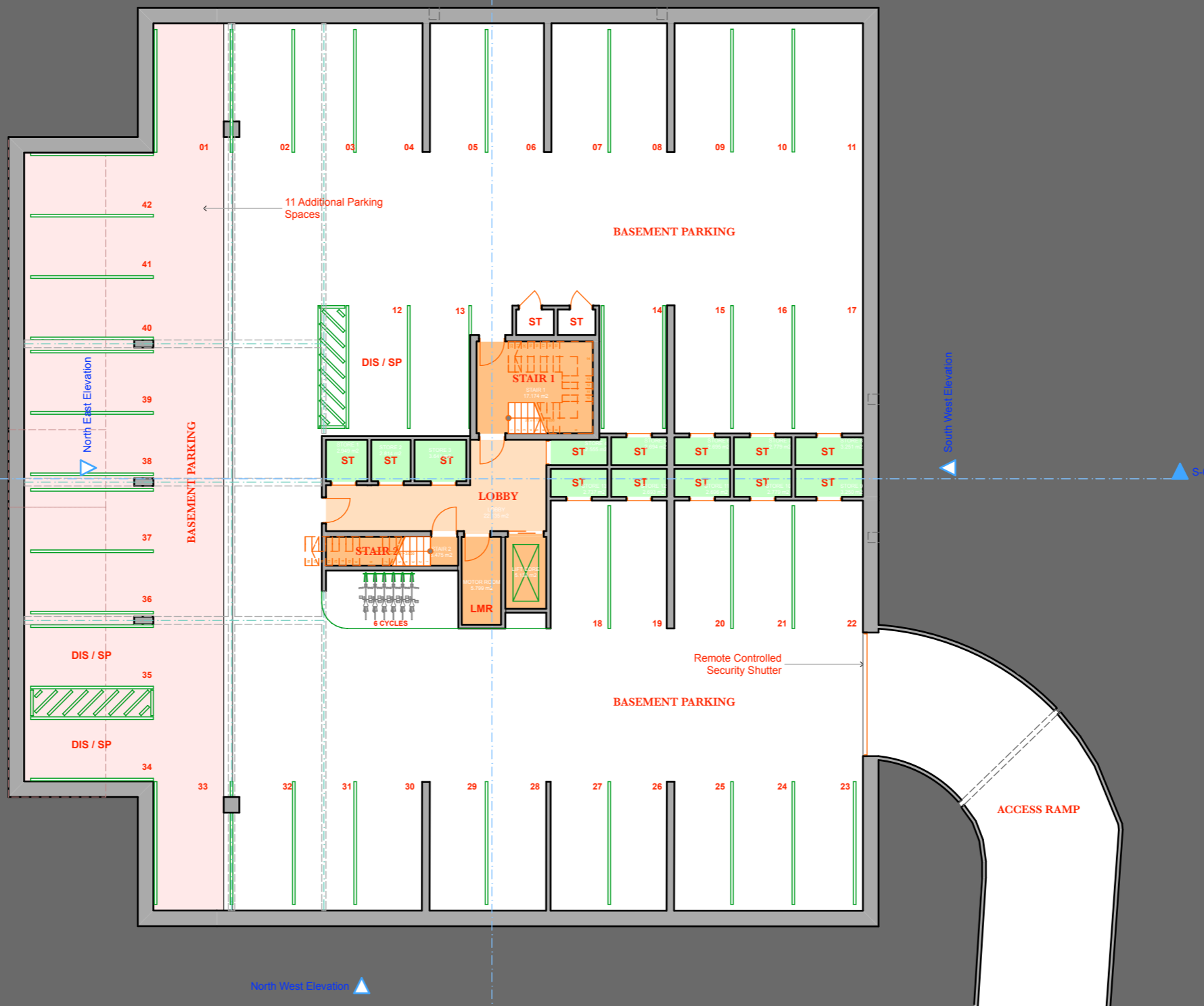


AVENUE MARECHAL JUIN

RUE LACOUR

RUE CIRRODE



© BRYANT + MOORE ARCHITECTS LTD.  
 THIS DRAWING IS THE PROPERTY OF BRYANT + MOORE ARCHITECTS LTD. AND IS ISSUED ON THE CONDITION THAT IT IS NOT REPRODUCED, DISCLOSED OR COPIED TO ANY UNAUTHORISED PERSON IN WHOLE OR PART WITHOUT PRIOR WRITTEN CONSENT.  
 NO DIMENSIONS ARE TO BE SCALED FROM THIS DRAWING. ALL DIMENSIONS STATED MUST BE VERIFIED ON SITE. THE ARCHITECT MUST BE ADVISED OF ANY DISCREPANCIES PRIOR TO ANY ITEM OF WORK BEING PUT IN HAND.  
 THIS DRAWING MUST BE READ TOGETHER WITH THE SPECIFICATION, BILL OF QUANTITIES AND RELATED DRAWINGS.

Rev.	Date	By	Check/Desc.

CLIENT: <b>BARBER HONEY LTD.</b>	TITLE: <b>Basement</b>
PROJECT: <b>CANNES 246 AVENUE MARECHAL JUIN</b>	SCALE: 1:200 @A3
STATUS: <b>CONCEPT</b>	DATE: 23/06/2012
	DRAWN BY: AM
	CHECKED: MB
	PRJ No: <b>12/150</b>
	DWG No: <b>16</b>
	REV: -

19 - 25 Salisbury Square,  
Old Hatfield,  
Hertfordshire  
AL9 5BT  
t: 01707 251 428  
lh@bryantandmoore.co.uk  
www.bryantandmoore.co.uk

BRYANT + MOORE ARCHITECTS LTD.